

## ENCODERS INCREMENTALI "SPECIALI"- "SPECIAL" INCREMENTAL ENCODERS

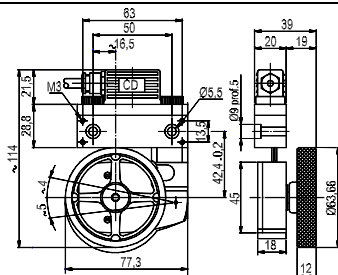
Questi encoder "speciali" sono una piccola selezione fra le numerose realizzazioni Sicod. Essa comprende encoder con ruote metriche, encoder bialbero, encoder con doppia elettronica, encoder con albero passante, encoder con custodia in acciaio inox.

These "special" encoders are a little selection among very high number of "custom" models designed by Sicod. This list includes encoders with metric wheels, encoders with double shaft, encoder with double electronics, encoder with trough-shaft, encoder with stainless steel container.

F4



RUOTA METRICA – METRIC WHEEL 200 mm

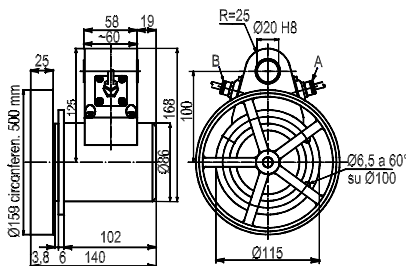


**Peso:** circa 320 g.  
**Protezione:** IP64  
**Connessioni:** cavo o connettore  
**Elettronica:** standard, line driver, push pull  
**Alimentazione:** 5V,8 ÷ 24V,18 ÷ 28V  
**N° Impulsi:** 5000  
**Weight:** about 320 g.  
**Protection:** IP64  
**Connections:** cable or connector  
**Electronics:** standard, line driver, push pull  
**Power supply:** 5V,8 ÷ 24V,18 ÷ 28V  
**Pulses/rev.:** 5000

P9



RUOTA METRICA – METRIC WHEEL 500 mm

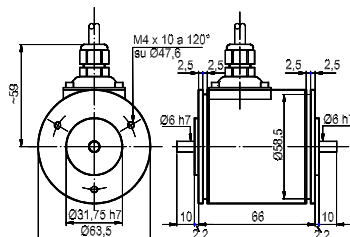


**Peso:** circa 2800 g.  
**Protezione:** IP66  
**Connessioni:** cavo o connettore  
**Elettronica:** standard, line driver, push pull  
**Alimentazione:** 5V,8 ÷ 24V,18 ÷ 28V  
**N° Impulsi:** 3600  
**Weight:** about 2800 g.  
**Protection:** IP66  
**Connections:** cable or connector  
**Electronics:** standard, line driver, push pull  
**Power supply:** 5V,8 ÷ 24V,18 ÷ 28V  
**Pulses/rev.:** 3600

F3B



BIALBERO – DOUBLE SHAFT

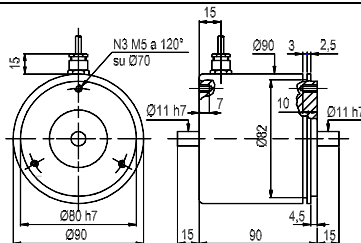


**Peso:** circa 600 g.  
**Protezione:** IP64  
**Conn. radiali:** cavo o connettore  
**Elettronica:** standard, line driver, push pull  
**Alimentazione:** 5V,8 ÷ 24V,18 ÷ 28V  
**N° Impulsi:** 10000  
**Weight:** about 600 g.  
**Protection:** IP64  
**Radial conn.:** cable or connector  
**Electronics:** standard, line driver, push pull  
**Power supply:** 5V,8 ÷ 24V,18 ÷ 28V  
**Pulses/rev.:** 10000

K9B



BIALBERO – DOUBLE SHAFT

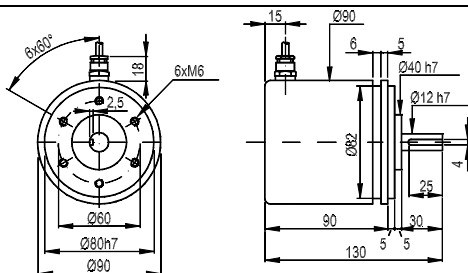


**Peso:** circa 870 g.  
**Protezione:** IP64  
**Conn. radiali:** cavo o connettore  
**Elettronica:** standard, line driver, push pull  
**Alimentazione:** 5V,8 ÷ 24V,18 ÷ 28V  
**N° Impulsi:** 3600  
**Weight:** about 870 g.  
**Protection:** IP64  
**Radial conn.:** cable or connector  
**Electronics:** standard, line driver, push pull  
**Power supply:** 5V,8 ÷ 24V,18 ÷ 28V  
**Pulses/rev.:** 3600

K9G



INOX

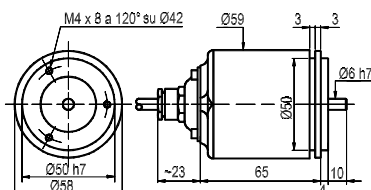


**Peso:** circa 2000 g.  
**Protezione:** IP65  
**Conn. Assiali o radiali:** cavo  
**Elettronica:** tutte  
**Alimentazione:** 5V,8 ÷ 24V,18 ÷ 28V  
**N° Impulsi:** 20000  
**Weight:** about 2000 g.  
**Protection:** IP65  
**Radial and Axial conn.:** cable  
**Electronics:** all  
**Power supply:** 5V,8 ÷ 24V,18 ÷ 28V  
**Pulses/rev.:** 20000

E8SX



INOX



**Peso:** circa 520 g.  
**Protezione:** IP65  
**Conn. Assiali o radiali:** cavo  
**Elettronica:** tutte  
**Alimentazione:** 5V,8 ÷ 24V,18 ÷ 28V  
**N° Impulsi:** 10000  
**Weight:** about 520 g.  
**Protection:** IP65  
**Radial and Axial conn.:** cable  
**Electronics:** all  
**Power supply:** 5V,8 ÷ 24V,18 ÷ 28V  
**Pulses/rev.:** 10000