

ENCODERS "DOPPI" - "DOUBLE" ENCODERS

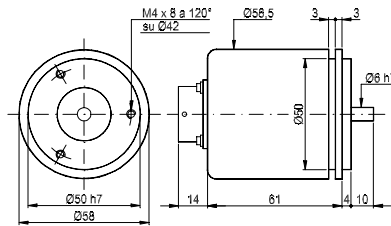
Questi trasduttori sono realizzati per quelle applicazioni dove è richiesta l'informazione da due encoder accoppiati allo stesso asse, la soluzione in un unico contenitore ne facilita l'applicazione e riduce i costi

These transducers are made for applications where is required the information from two connected encoders on the same shaft, the solution in a single case simplifys the application and reduces cost.

ZI58S



ASSOLUTO + INCREMENTALE
ABSOLUTE + INCREMENTAL

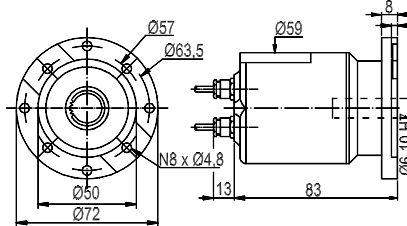


Peso: circa 290 g.
Protezione: IP65
Conn. Assiali o radiali: cavo o connettore
Alimentazione: 8 ÷ 24V, 18 ÷ 28V
Risoluzione max. assoluto: 64 div.
Risoluzione max. incrementale: 2540
Codici: Gray, custom
Weight: about 290 g.
Protection: IP65
Radial or axial conn.: cable or connector
Power supply: 8 ÷ 24V, 18 ÷ 28V
Max. absolute resolution: 64
Max. incremental resolution.: 2540
Code: Gray, custom

G2H



DOPPIA ELETTRONICA
DOUBLE ELECTRONICS

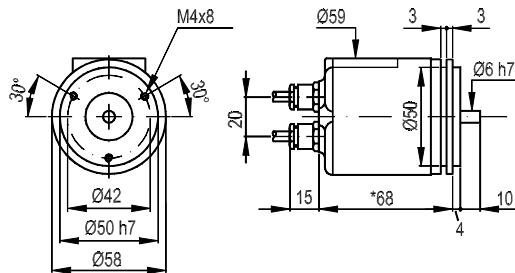


Peso: circa 510 g.
Protezione: IP65
Conn. Assiali o radiali: cavo o connettore
Elettronica: standard, line driver, push-pull
Alimentazione: 5V, 8 ÷ 24V, 18 ÷ 28V
N° Impulsi max.: 1250
Freq. Max: 100 KHz
Weight: about 510 g.
Protection: IP65
Radial and Axial conn.: cable or connector
Electronics: standard, line driver, push-pull
Power supply: 5V, 8 ÷ 24V, 18 ÷ 28V
Max. pulses/rev.: 1250
Max. Frequency: 100 kHz

E8SY



DOPPIA ELETTRONICA
DOUBLE ELECTRONICS

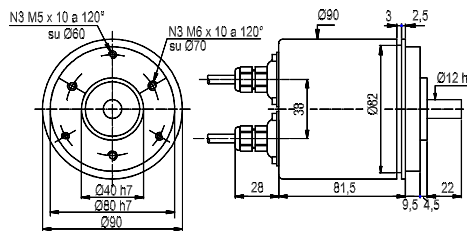


Peso: circa 510 g.
Protezione: IP64
Conn. Assiali o radiali: cavo o connettore
Elettronica: standard, line driver, push-pull
Alimentazione: 5V, 8 ÷ 24V, 18 ÷ 28V
N° Impulsi max.: 1250
Freq. Max: 100 KHz
Weight: about 510 g.
Protection: IP64
Radial and Axial conn.: cable or connector
Electronics: standard, line driver, push-pull
Power supply: 5V, 8 ÷ 24V, 18 ÷ 28V
Max. pulses/rev.: 1250
Max. Frequency: 100 kHz

K9H



DOPPIA ELETTRONICA
DOUBLE ELECTRONICS

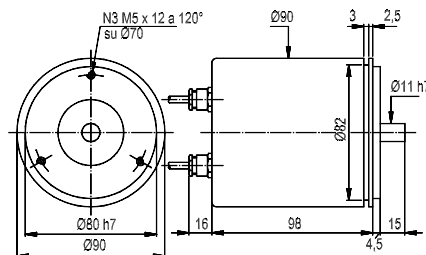


Peso: circa 850 g.
Protezione: IP66
Conn. Assiali o radiali: cavo o connettore
Elettronica: standard, line driver, push-pull
Alimentazione: 5V, 8 ÷ 24V, 18 ÷ 28V
N° Impulsi max.: 1250
Freq. Max: 100 KHz
Weight: about 850 g.
Protection: IP66
Radial and Axial conn.: cable or connector
Electronics: standard, line driver, push-pull
Power supply: 5V, 8 ÷ 24V, 18 ÷ 28V
Max. pulses/rev.: 1250
Max. Frequency: 100 kHz

K9K



DOPPIA RISOLUZIONE
DOUBLE RESOLUTION

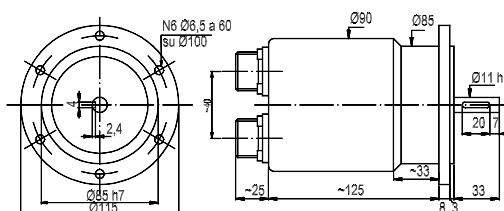


Peso: circa 950 g.
Protezione: IP65
Conn. Assiali o radiali: cavo o connettore
Elettronica: standard, line driver, push-pull
Alimentazione: 5V, 8 ÷ 24V, 18 ÷ 28V
N° Impulsi max.: 18000
Freq. max: 100 KHz (300 opz.)
Weight: about 950 g.
Protection: IP65
Radial and Axial conn.: cable or connector
Electronics: standard, line driver, push-pull
Power supply: 5V, 8 ÷ 24V, 18 ÷ 28V
Max. pulses/rev.: 18000
Max. Frequency: 100 kHz (300 opz.)

M5K



DOPPIA RISOLUZIONE
DOUBLE RESOLUTION



Peso: circa 1500 g.
Protezione: IP65
Conn. Assiali o radiali: cavo o connettore
Elettronica: standard, line driver, push-pull
Alimentazione: 5V, 8 ÷ 24V, 18 ÷ 28V
N° Impulsi max.: 10000
Freq. max: 100 KHz (300 opz.)
Weight: about 1500 g.
Protection: IP65
Radial and Axial conn.: cable or connector
Electronics: standard, line driver, push-pull
Power supply: 5V, 8 ÷ 24V, 18 ÷ 28V
Max. pulses/rev.: 10000
Max. Frequency: 100 kHz (300 opz.)



Sta. Virgilia 29 Local.1A 28033 Madrid
Tfno.: 91 764 21 00 Fax.: 91 764 21 32
www.guemisa.com Email.:info@guemisa.com