

GENERAL:

MODEL LP-50F IS A 50 mm STROKE CONDUCTIVE PLASTIC, LINEAR MOTION POTENTIOMETER OF WHICH PERFORMANCE IS UNAFFECTED BY SHAFT ROTATION. ITS COMOLD ELEMENT AND PRECISION CONSTRUCTION ALLOW THE UNIT TO FEATURE LOW TORQUE, SUPERB SMOOTHNESS AND LONG LIFE.

ELECTRICAL SPECIFICATIONS:

ELECTRICAL STROKE: 50 mm (F.S.)
 TOTAL RESISTANCE: 0.2, 0.5, 1, 2, 5 KOHMS
 TOTAL RESIS. TOLERANCE: ±20%
 LINEARITY (INDEPENDENT): ±0.5% (±0.2% AVAILABLE)
 REPEATABILITY: ±0.005%
 POWER RATING: 1.5 WATTS @70°C
 INSULATION RESISTANCE: 500 meg OHMS MIN. @ 500 Vdc
 DIELECTRIC STRENGTH: 500 Vrms, 50/60Hz, for 1 MINUTE
 RESISTANCE TEMP. COEFFICIENT: 400 ppm/°C

MECHANICAL SPECIFICATIONS:

MECHANICAL STROKE: 55 mm
 FRICTION: 50 gf (1.8 oz)
 WEIGHT: 75 g (2.7 oz)

ENVIRONMENTAL SPECIFICATIONS:

OPERATING TEMPERATURE: -40°C to +100°C
 VIBRATION: 10 Gs, 500 Hz
 SHOCK: 50 Gs, 11 mS
 LIFE: 5 MILLION CYCLES MIN.

| C.O.N | SYM | DESCRIPTION | DATE | DRAWN | APPR'D |
|-------|-----|-------------|------|-------|--------|
| | | | | | |

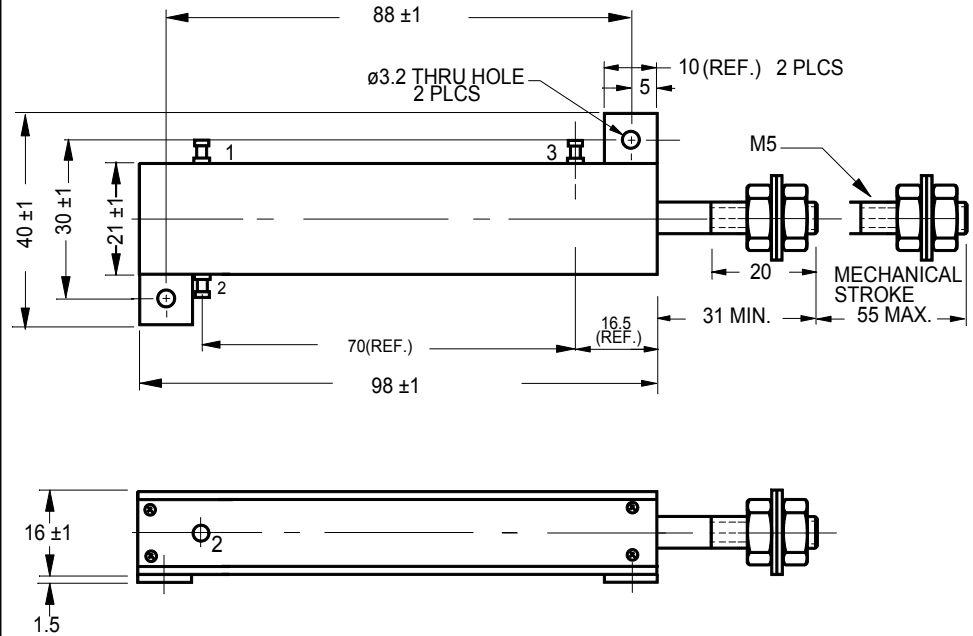


FIGURE 1 OUTLINE DIMENSIONS

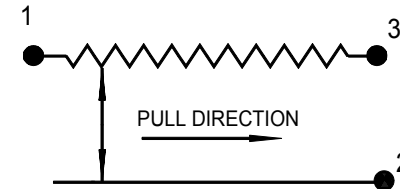


FIGURE 2 SCHEMATIC



GUEMISA

Sta. Virgilia 3-b ; 1ºF 28033 Madrid
 Tfno.: 91 764 21 00 Fax.: 91 764 21 32
 Email: info@guemisa.com

UNLESS OTHERWISE SPECIFIED, DIMENSIONS ARE IN mm(in).

TOLERANCES:
 ANGLES ±1.5°
 ≤10 mm: ±0.25
 <100 mm: ±0.5
 ≥100 mm: ±1

| | | | |
|-------------|-----------|--------------|---------|
| DRAWN | T.TSUGAWA | DATE | 1/27/95 |
| CHECKED | | DATE | |
| APPROVED | | DATE | |
| APPROVED | | DATE | |
| SCALE: NONE | | FILE: LP-50F | |

SPECIFICATION DWG
 FOR
 MODEL LP-50F
 LINEAR MOTION
 POTENTIOMETER

A-MAC-B62