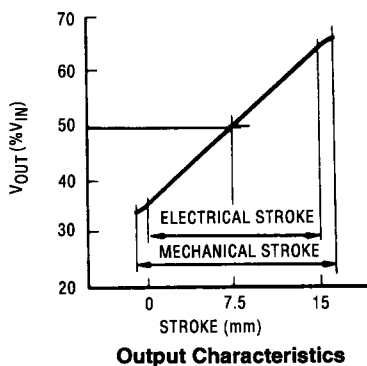
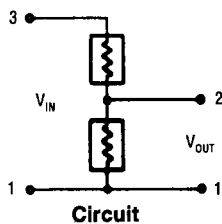
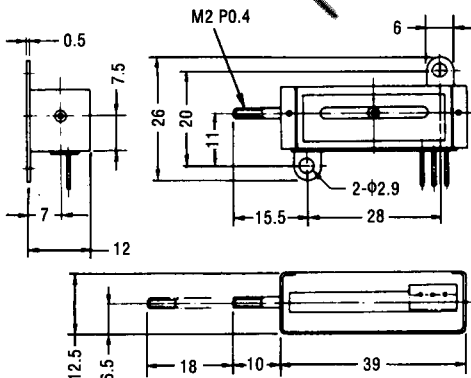
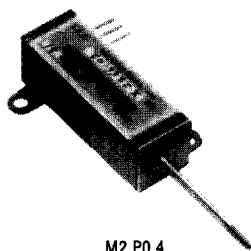


# LP-15UL SERIES

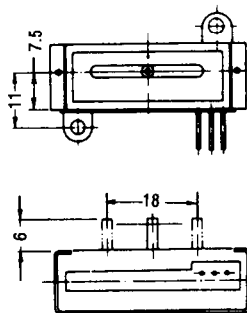
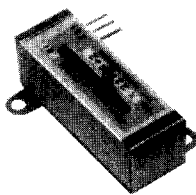
The LP-15UL series linear motion sensors are designed for high volume production and provide a precision product featuring a simple, small, light weight design and Midori's exclusive contactless Blue Pot elements.

- Essentially Infinite Life
- Compact Package (Mating Connector Available)
- End or Side Actuated Versions
- No Noise Contactless Design
- Low Friction

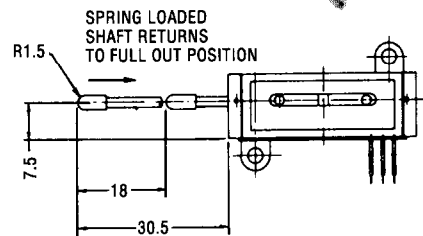
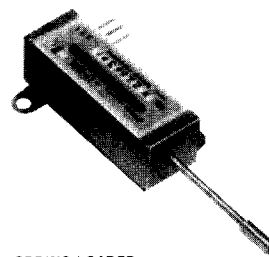
## LP-15UL-S



## LP-15UL-K (side actuated)



## LP-15UL-B (return spring)



Sta. Virgilia 29 Local.1A 28033 Madrid  
 Tfno.: 91 764 21 00 Fax.: 91 764 21 32  
[www.guemisa.com](http://www.guemisa.com) Email: info@guemisa.com

SPECIFICATIONS			
ELECTRICAL		MECHANICAL	
Electrical Stroke	12mm	Mechanical Stroke	18mm
Output Sensitivity	Min. 1.4% $V_{IN}/1mm$	Friction (Spring)	Max. 50g (50~150g)
Linearity	$\pm 1\%$ FS (FS = 12mm)	Weight	Approx. 12g
Input Impedance	$8k\Omega \pm 30\%$		
Input Voltage	Max. $7V_{DC}$		
Insulation Resistance	Min. $100M\Omega$ , $500V_{DC}$		
Dielectric Strength	$500V_{AC}$ , 1 Minute		
Operating Temperature $-20^{\circ}$ to $+80^{\circ}C$			