

ATR241

Controller

Double Setpoint

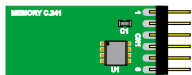


Technical data

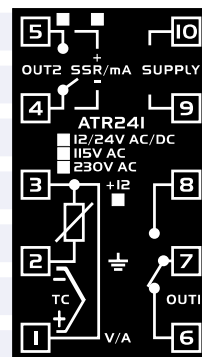
- SIZE: 48x48(front) x135 mm
- POWER SUPPLY: 12/24Vac, 115/230Vac - 50/60Hz
- CONSUMPTION: 3 W
- OPERATING TEMPERATURE: 0-45 °C
- 1 UNIVERSAL INPUT (TC K/S/R/I), PT100, 0..10V, 0-4..20mA)
- 1 RELAY OUTPUT 8A
- 1 OUTPUT selectable for RELAY, SSR, 4..20mA (retransmission of setpoint/process)
- CONTROL MODES: ON/OFF, P, PI, Autotuning PID, PD time proportioned
- Programmable alarms
- ACCURACY: 0.2%±1digit for TC/RTD/mA/V
- DUAL DISPLAY 4 digits
- Configuration password
- MEMORY CARD for upgrading, configuration, programming
- Programmable rise gradient
- Open/Close logic for motorised valves
- Programming of a 3 steps-cycle
- Input selectable for load cells (16bit)
- Frontal extraction

Applications

- Melting furnaces
- Cold stores
- Chillers
- Sterilizers
- Injection moulding
- Driers



Quick configuration with Memory card



Terminal connections

Ordering code

ATR241-	<input type="checkbox"/>	
Supply	A	24V AC ±15% 50/60Hz
	AD	12...24V AC DC ±15% 50/60Hz
	BC	230/115V AC ±15% 50/60Hz (with internal jumper)

For full product coding and available options, please check the latest Pixsys price list.

ATR242

Controller

Three Setpoints

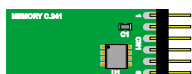


Technical data

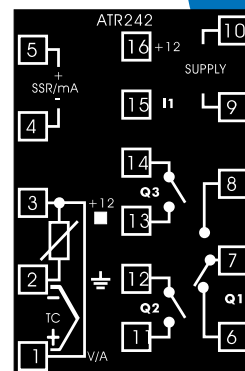
- SIZE: 48x48(front) x135 mm
- POWER SUPPLY: 12/24Vac, 115/230Vac - 50/60Hz
- CONSUMPTION: 3 W
- OPERATING TEMPERATURE: 0-45 °C
- 1 UNIVERSAL INPUT (TC K/S/R/I), PT100, 0..10V, 0-4..20mA)
- 1 RELAY OUTPUT 8A + 2 RELAYS 5A for alarm
- 1 OUTPUT selectable for RELAY, SSR, 0/4..20mA (retransmission of setpoint/process)
- CONTROL MODES: ON/OFF, P, PI, Autotuning PID, PD time proportioned
- Programmable alarms (max, min, band, deviation)
- ACCURACY: 0.2%±1digit for TC/RTD/mA/V
- DUAL DISPLAY 4 digits
- Configuration password
- MEMORY CARD for upgrading, configuration, programming
- Programmable rise gradient
- Open/Close logic for motorised valves
- Programming of a 3 steps-cycle
- Input selectable for load cell (16bit)
- Frontal extraction
- Digital input selectable for HOLD and SWITCH SETPOINT 1/2

Applications

- Melting furnaces
- Cold stores
- Chillers
- Sterilizers
- Injection moulding
- Driers



Quick configuration with Memory card



Terminal connections

Ordering code

ATR242-	<input type="checkbox"/>	
Supply	A	24V AC ±15% 50/60Hz
	AD	12...24V AC DC ±15% 50/60Hz
	BC	230/115V AC ±15% 50/60Hz (with internal jumper)



Sta. Virgilia 29 Local.1A 28033 Madrid
Tfno.: 91 764 21 00 Fax.: 91 764 21 32
www.guemisa.com Email.:info@guemisa.com

For full product coding and available options, please check the latest Pixsys price list.