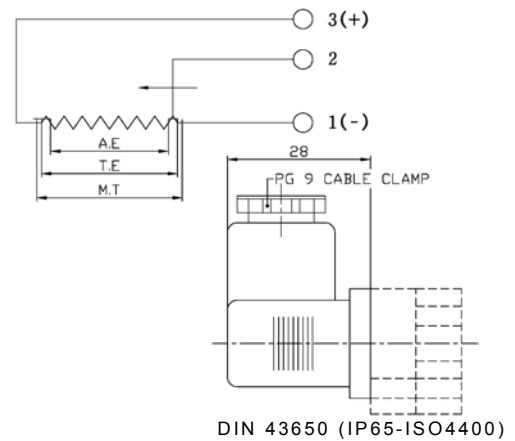


KTC

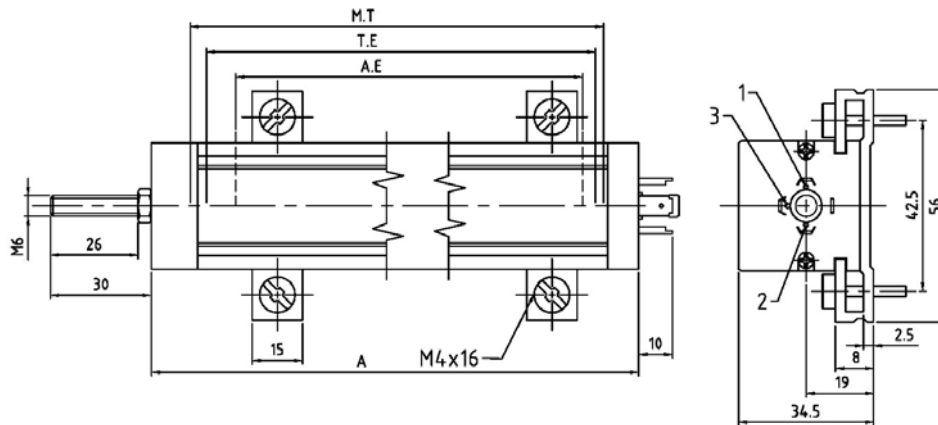
LINEAR POSITION TRANSDUCER



ELECTRICAL CONNECTIONS



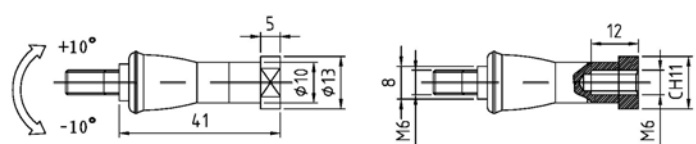
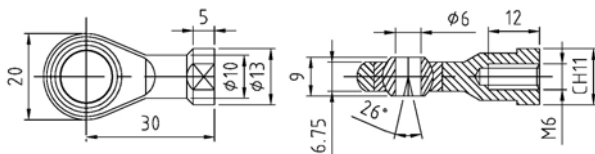
DIMENSION



CONTROL ROD

ROD END BEARING (KTC-01)

LINK BALL (KTC-02)



SPECIFICATION

MODEL	75	100	150	175	200	225	250	300	350	375	400	450	500	525	600	650	700	750	800	850	900	1000	
Total Electrical Travel (T.E)	mm	76	102	152	180	205	229	255	305	355	381	405	457	505	533	610	655	705	762	805	855	914	1016
Active Electrical Travel (A.E)	mm	75	100	150	177	203	226	253	302	353	378	403	455	503	531	607	653	703	759	803	853	912	1013
Resistance +/-20%	KΩ	2.5	3.4	5.0	5.8	6.8	2.4	2.6	3.2	3.7	4.0	4.3	4.8	5.3	5.6	6.4	6.9	7.5	8.0	8.5	9.1	9.6	10.7
Independent Linearity	±%	0.07	0.07	0.07	0.07	0.07	0.07	0.07	0.07	0.07	0.07	0.05	0.05	0.05	0.05	0.05	0.05	0.05	0.05	0.05	0.05	0.05	0.05
Mechanical Travel (M.T)	mm	79	104	155	181	207	231	258	307	358	384	409	460	508	536	612	658	709	765	80	859	917	1019
Resolution		infinite																					
Recommended-Cursor Current	μA	< 1																					
Temperature Range	°C	-55 ~ +125																					
Dimensions A	mm	139	164	215	240	266	291	317	367	418	444	469	520	571	596	672	723	774	825	875	926	977	1160

ORDERING INFORMATION

KTC

—

MODEL

—

CONTROL ROD

75 / 100 / 150 / 175 / 200 / 225 / 250 / 300 / 350 / 375 / 400 / 450 / 500 / 525 / 600 / 650 / 700 / 750 / 800 / 850 / 900 / 1000

01: rod end bearing (KTC-01)
02: link ball (KTC-02)